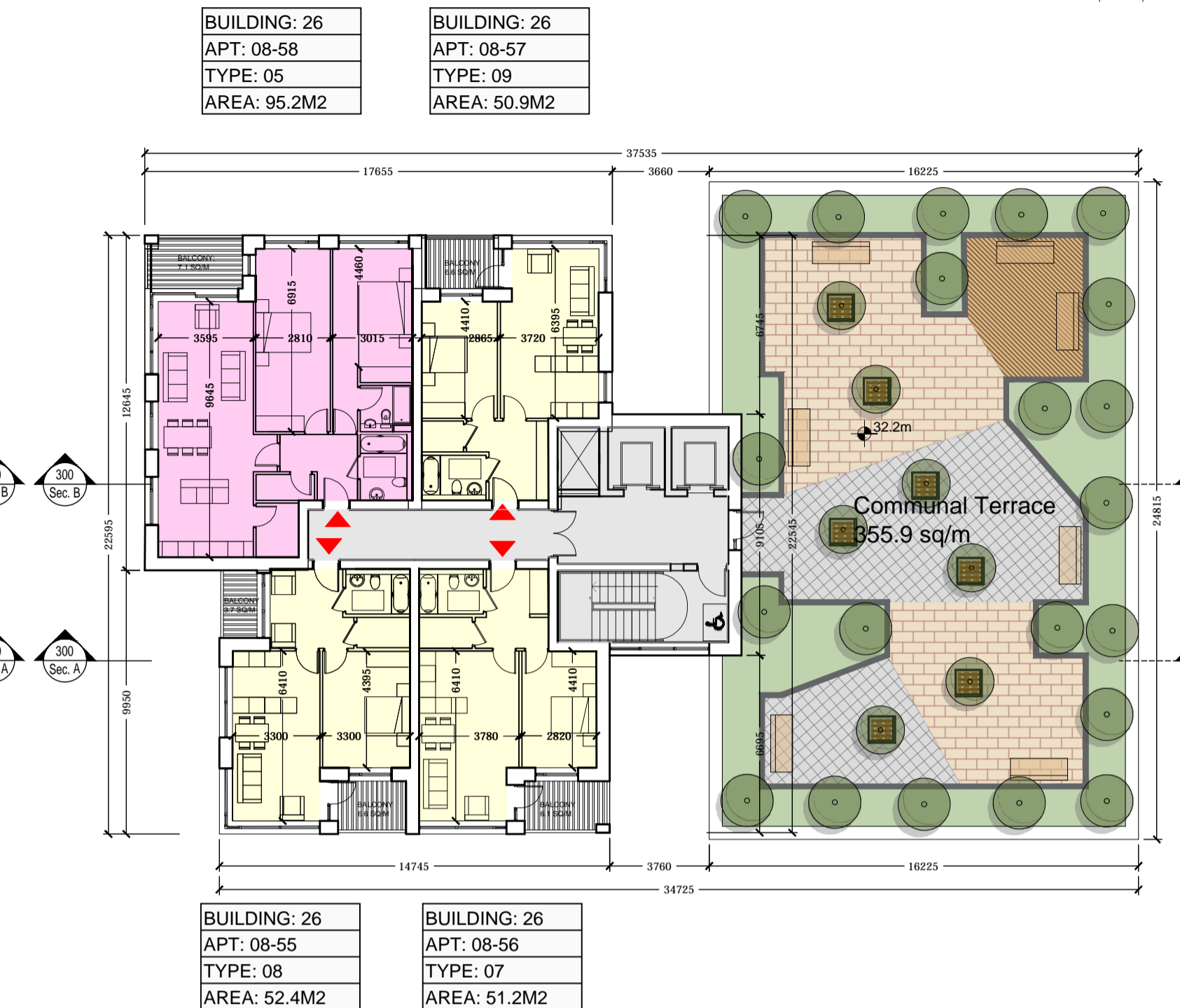
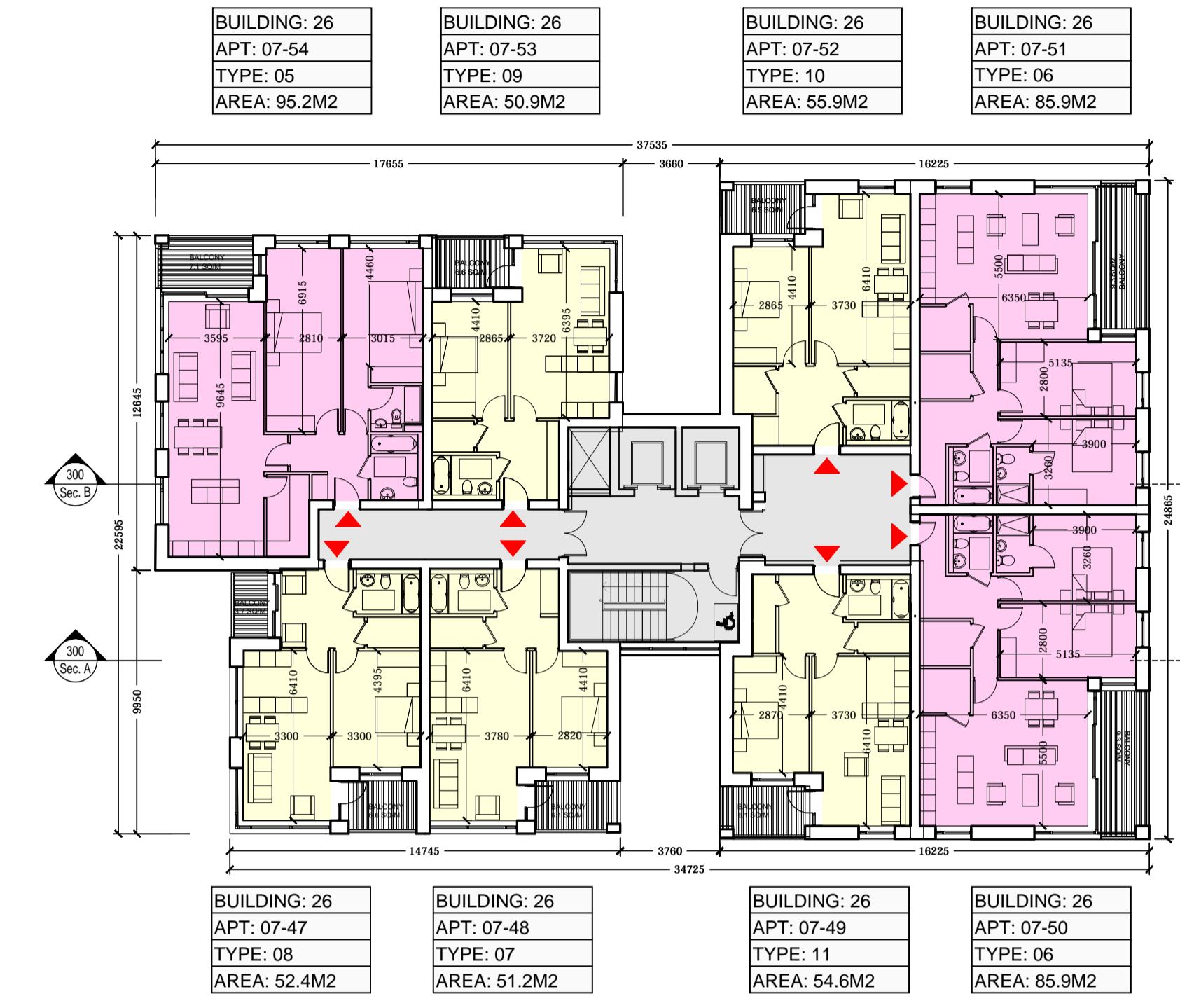
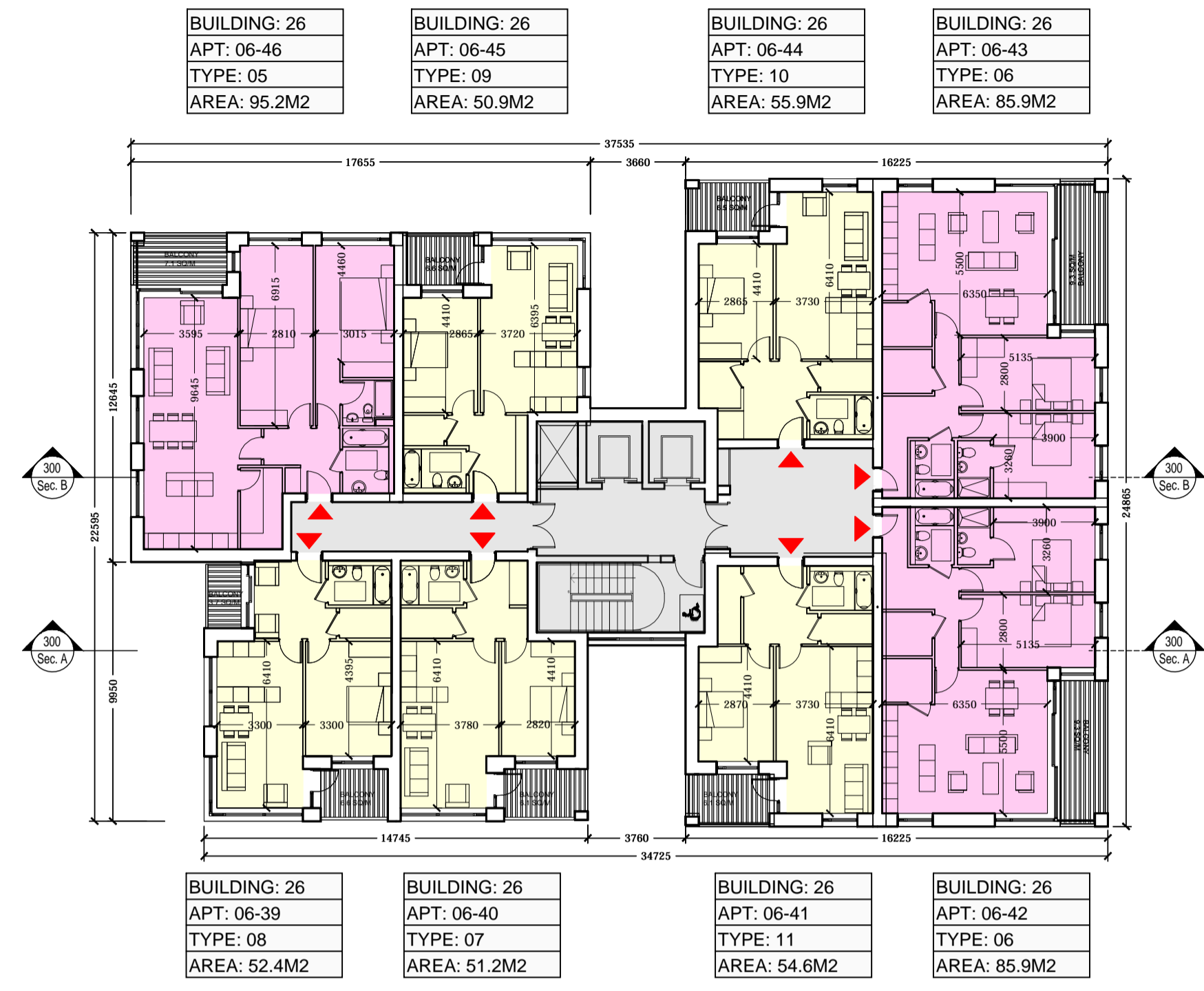


NOTE: - DO NOT SCALE. USE FIGURED DIMENSIONS ONLY.  
 - THIS DRAWING IS TO BE READ IN CONJUNCTION WITH ALL RELEVANT SPECIFICATIONS AND DRAWINGS.  
 - ALL DIMENSIONS TO BE CHECKED ON SITE.  
 - IN THE EVENT OF ANY DISCREPANCIES BETWEEN DRAWINGS THE CONTRACTOR IS TO INFORM THE ARCHITECT IMMEDIATELY.

REV	DATE	DESCRIPTION	DRWN	CHKD	APPRD
A	23.11.2018	LONGGRIFIN SHOOT	PH	PH	PH
P	23.07.2019	ISSUED FOR PLANNING	PH	PH	PH

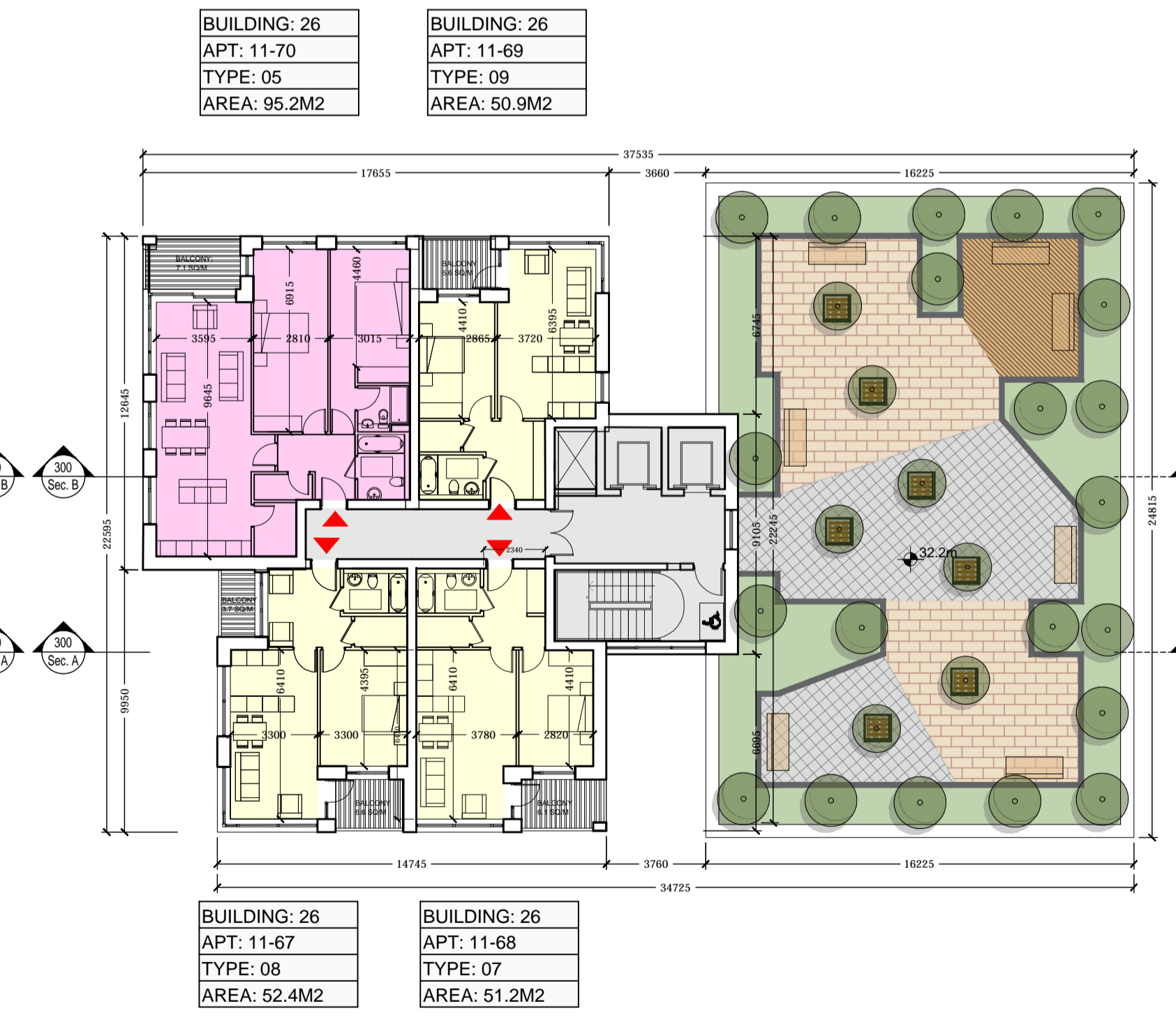
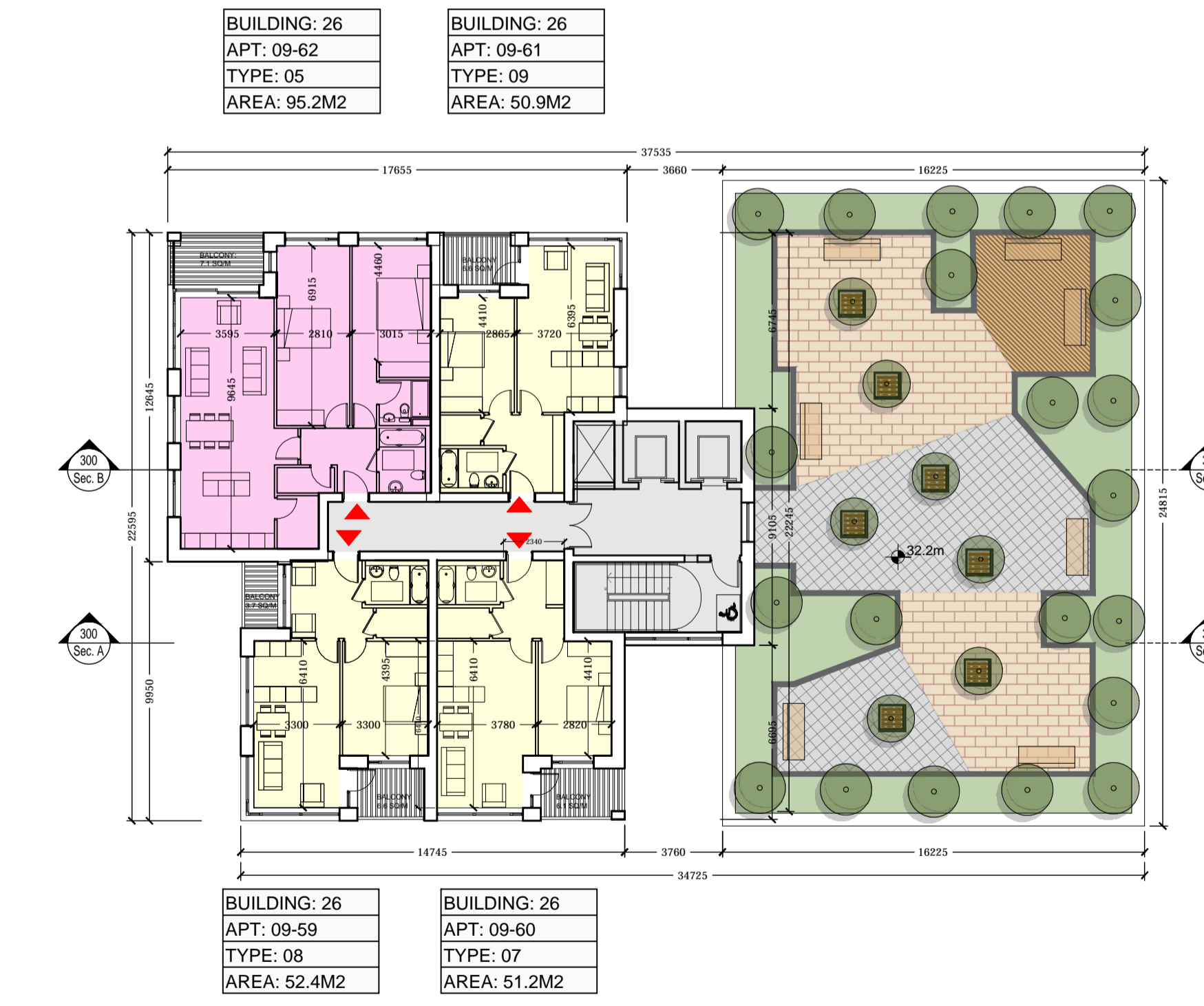


- ALL DIMENSIONS IN MILLIMETERS
  - WARDROBES SHOWN IN BEDROOM AREAS ARE NOT COUNTED TOWARD TOTAL STORAGE AREAS.
  - FURNITURE AND FITTINGS SHOWN ARE INDICATIVE
- FOR INFORMATION REGARDING LANDSCAPING REFERENCE: RONAN MC DIARMADA & ASSOCIATES LTD.
- FOR INFORMATION REGARDING ENGINEERING REFERENCE: WATERMAN MOYLAN ENGINEERING CONSULTANTS.
- INDICATES FINISHED FLOOR LEVEL
- LEGEND:
- ONE BEDROOM APARTMENTS
  - TWO BEDROOM APARTMENTS
  - ANCILLARY FACILITIES FOR RESIDENTS
  - SITE BOUNDARY
- MATERIALS LEGEND
- Brick type A Finish
  - Brick type B Finish
  - White External Plaster Render
  - Glazed Panel
  - Glazed Sliding Door
  - Insulated metal infill panels
  - Insulated metal panel doors
  - Powder coated metal parapets
  - Powder coated metal railings
  - Powder coated balcony fascia

LEVEL 6  
Scale 1:200

LEVEL 7  
Scale 1:200

LEVEL 8  
Scale 1:200



LEVEL 9  
Scale 1:200

LEVEL 10  
Scale 1:200

LEVEL 11  
Scale 1:200